

PRODUCT DATASHEET

DYB60 220V
Transfer Pump
Kit C



PRODUCT DESCRIPTION

Product Name	:	Kit 220volt DYB60 (Kit C)
Product Code	:	KIT220V
Product Purpose	:	Mobile Fuelling
Product Category	:	Transfer Pump
Usage	:	Light Commercial Use
Suitable Fuel	:	Diesel / Kerosene

Product Description:

DYB60 220V TRANSFER PUMP KIT C

The Kit C is a complete solution designed for mobile fuel transfer. Included in this kit is a DYB60 220V Transfer pump, an Automatic TD Nozzle with swivel and one FM120L Flowmeter. The kit is also equipped with a 4-meter retail grade diesel hose, 3-meter clear suction hose and a 30-micron water trap filter to ensure clean fuel delivery. Transition fittings are also included, making the system ready for straightforward installation and immediate use.



TECHNICAL SPECIFICATIONS

TECHNICAL SPESIFICATIONS	
Model Name	DYB60 220V ELECTRONIC TRANSFER PUMP
Model Code	TP-DYB60A
Flowrate (l/min)	60 L/min
Voltage	220V
Power	550W
Suction	3m
Head	5-7m
RPM	2800
Dimensions	29 X 12 X 24 Boxed
Weight	8 kg
Gross Weight	8,8 kg
Port size Inlet	1" (25mm)
Port size Outlet	1" (25mm)
Body	Cast Iron
Operating Temperature	-40-80°C

**PLEASE NOTE: Customer needs to Include search protector:*



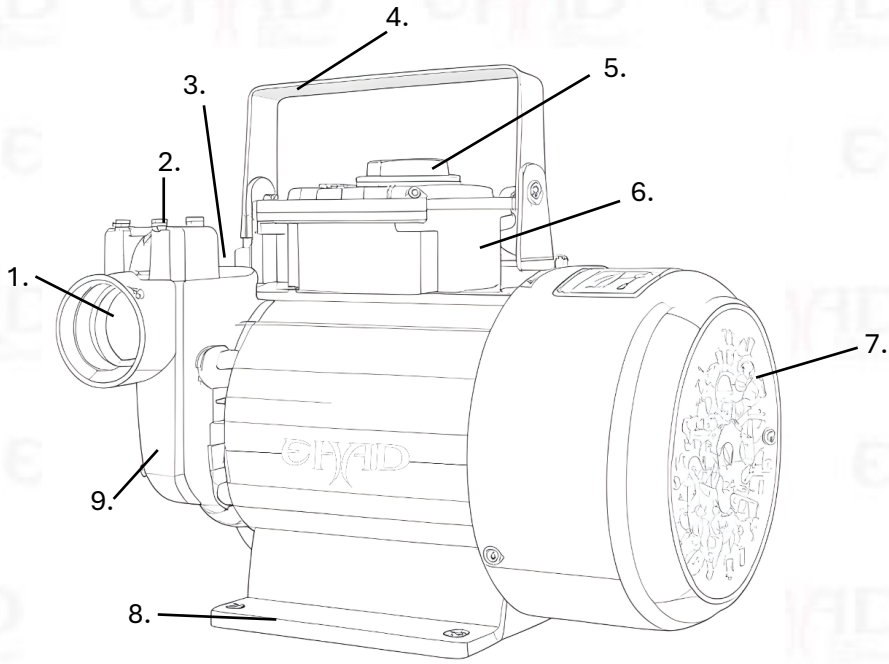
TECHNICAL SPECIFICATIONS

TECHNICAL SPECIFICATIONS	
Model Name	FM120 Mechanical Flowmeter
Model Code	FM-FM120L
Min. Flowrate (l/min)	20 lpm
Max. Flowrate (l/max)	120 lpm
Max. Working Pressure	3.5 Bar
Number of Digits	4 digits – Reset Total 8 digits – Total
Accuracy	± 0.5%
Dimensions	22.5 X 16.5 X 17 Boxed
Weight	1.8 kg
Port size Inlet	1" BSP
Port size Outlet	1" BSP
Body	Aluminium & Plastic
Additional	Sealed to be used outdoors, water and weather resistant.

TOTAL WEIGHT & DIMENSIONS OF KIT A	
Weight	10.8 kg
Dimensions	42 x 35 x 35

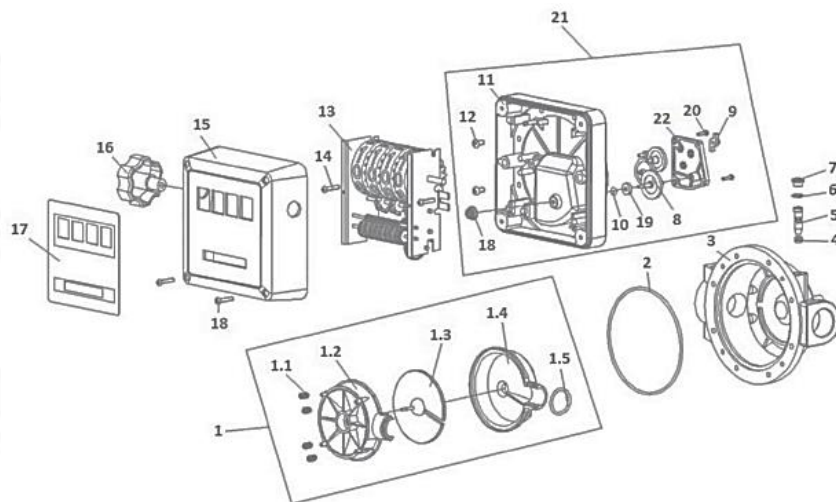


SKETCH OF DYB60 220V



ITEM	DESCRIPTION
1	Outlet 1
2	Outlet 2
3	Bypass Valve
4	Carrying Handle
5	On/Off switch
6	Capacitor
7	Cooling Fan
8	Foot Stand
9	Pump Casing

EXPLOSIVE VIEW – FM120



REFERENCE NUMBER	DESCRIPTION	QTY
1	Complete Measuring Chamber	1
1.1	Cylindrical Spring	4
1.2	Top Cover of the Chamber	1
1.3	Oscillating Disk	1
1.4	Bottom Cover of the Chamber	1
1.5	O'ring 23,47 x 2,62mm	1
2	AO'ring 110 x 72 x 3,53mm	1
3	Bottom Body of the Meter	1
4	O'ring 4,47 x 1,78mm	1
5	Calibration Screw	1
6	O'ring 9,25 x 1,78mm	1
7	Calibration Screw Plug	1
8	Transmission Gear	1
9	Gear Base	1
10	Sealing Bezel	1
11	Intermediate Casing	1
12	M5 x 16mm	8
13	Complete Mechanical Counter	1
14	Screw M4 x x20mm	2
15	Front Cover	1
16	Reset Button	1
17	Front Sticker for 4 Digits	1
18	Bevel Gear	1
9	Cover Seal	1
20	Screw M3 x 10mm	4
21	Complete Intermediate Assembly	1
22	Gear Base Cover	1

CONTACT US



+27 44 004 0440



sales@ehad.co.za



14 Ruby Crescent,
Tamsui Industria, George, 6529



www.ehad.co.za

